

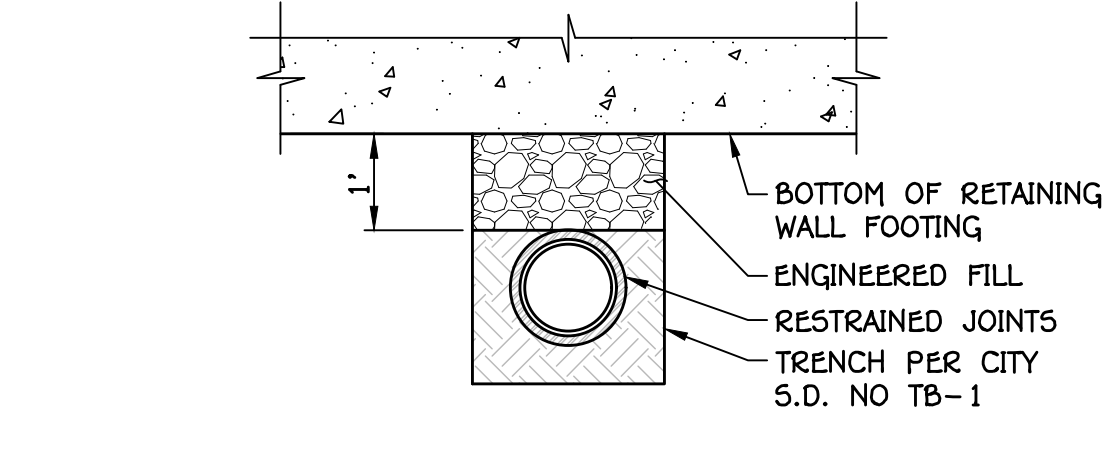
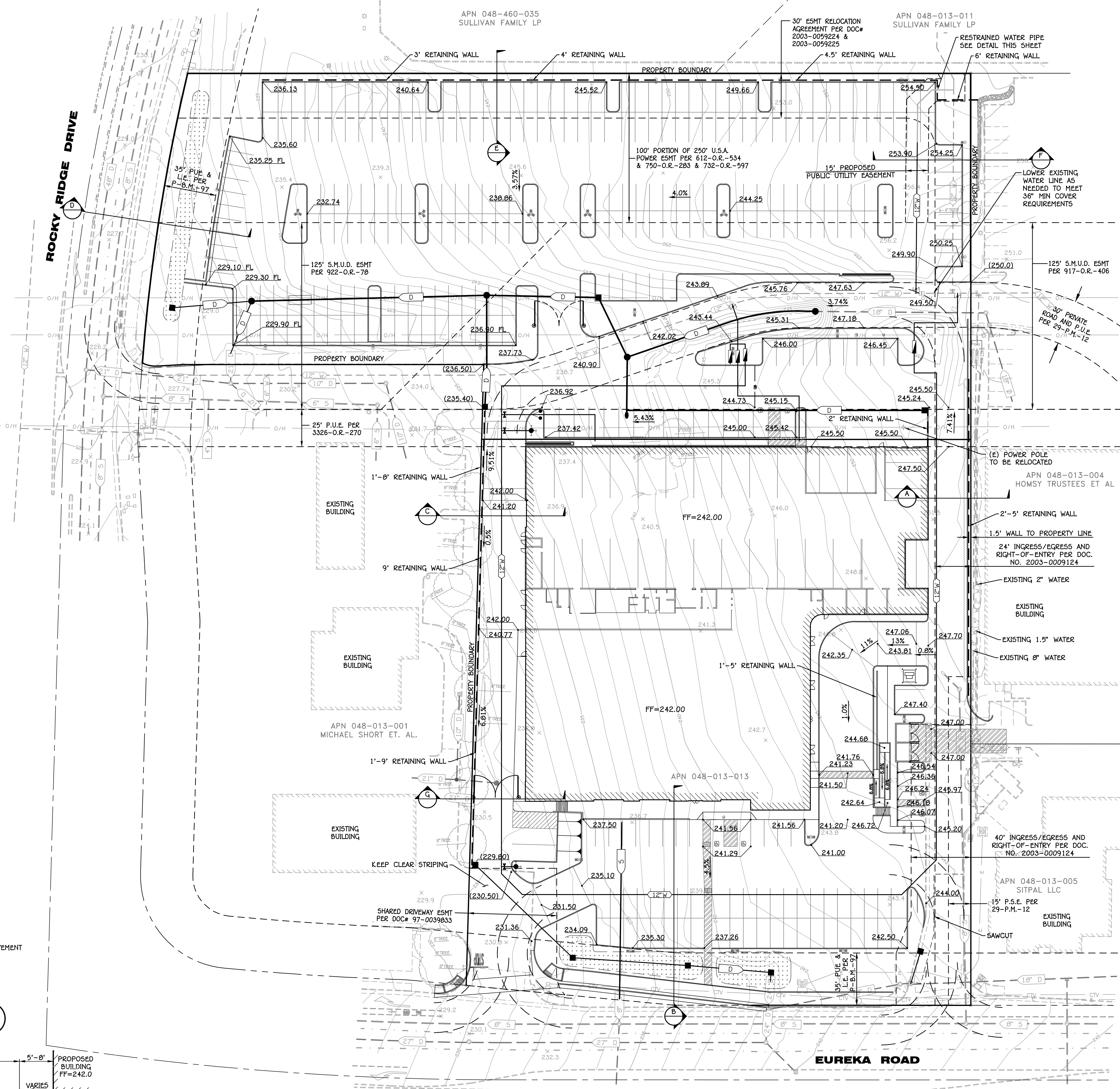
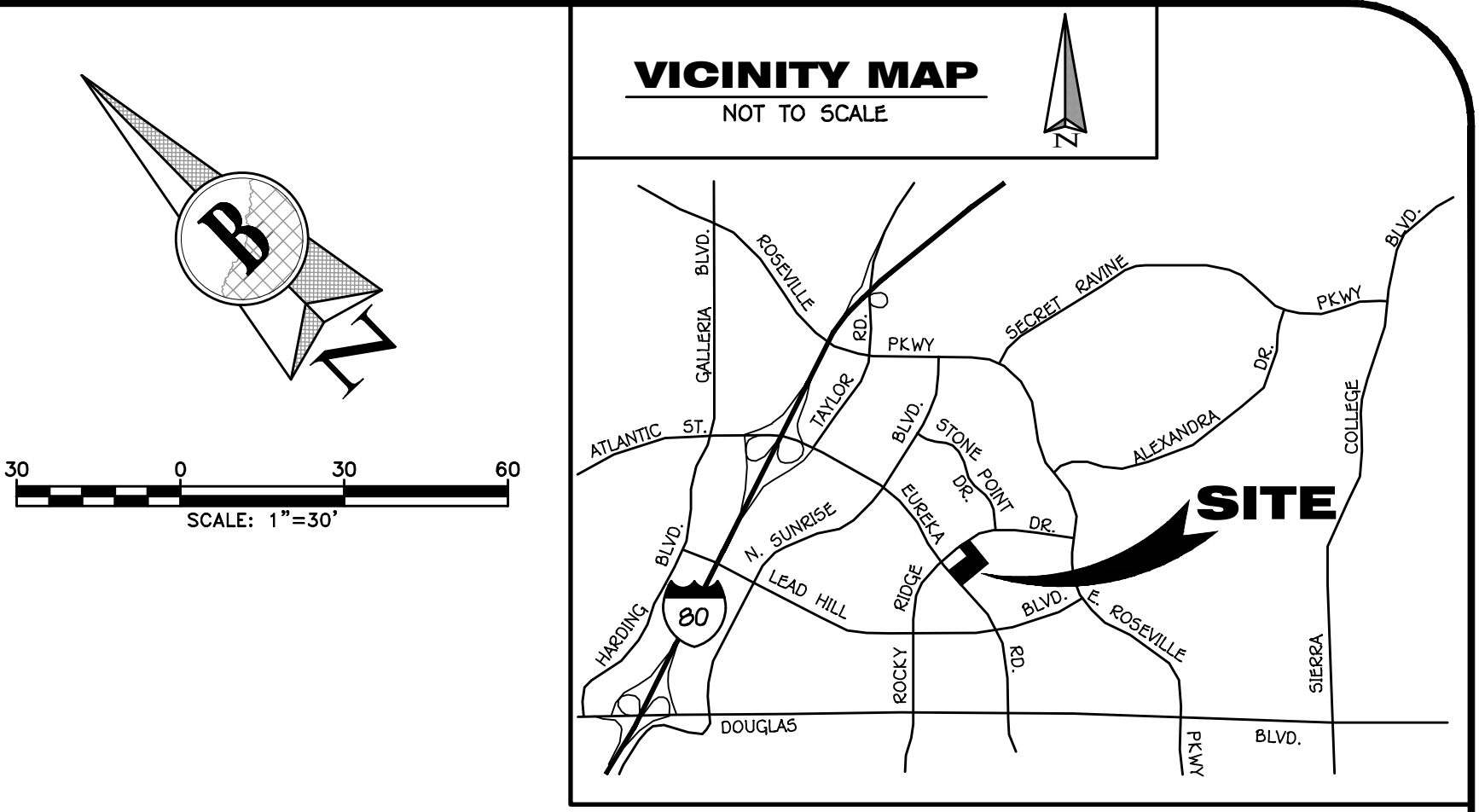
- NOTES:**
1. THIS PRELIMINARY GRADING PLAN IS SCHEMATIC ONLY, AND IS INTENDED TO DEPICT THE PROPOSED GENERAL DRAINAGE CONCEPTS AND THE MAGNITUDE OF CUTS AND FILLS. THE FINISHED DESIGN MAY INCORPORATE MINOR REVISIONS DUE TO FINAL DESIGN CONSIDERATIONS.
 2. ALL GRADES SHOWN HEREON ARE FINISHED SURFACE GRADES.
 3. A RECIPROCAL PARKING AND ACCESS AGREEMENT WILL BE PROVIDED BETWEEN THE PARCELS.
 4. ALL IMPROVEMENTS ARE TO CONFORM TO THE CITY OF ROSEVILLE STANDARDS AND NO DEVIATIONS FROM THOSE STANDARDS ARE PROPOSED.
 5. EXISTING UTILITIES TO BE REMOVED AS NECESSARY TO ACCOMMODATE LOCATIONS OF PROPOSED BUILDINGS.

ROSEVILLE MERCEDES BENZ SPRINTER VAN

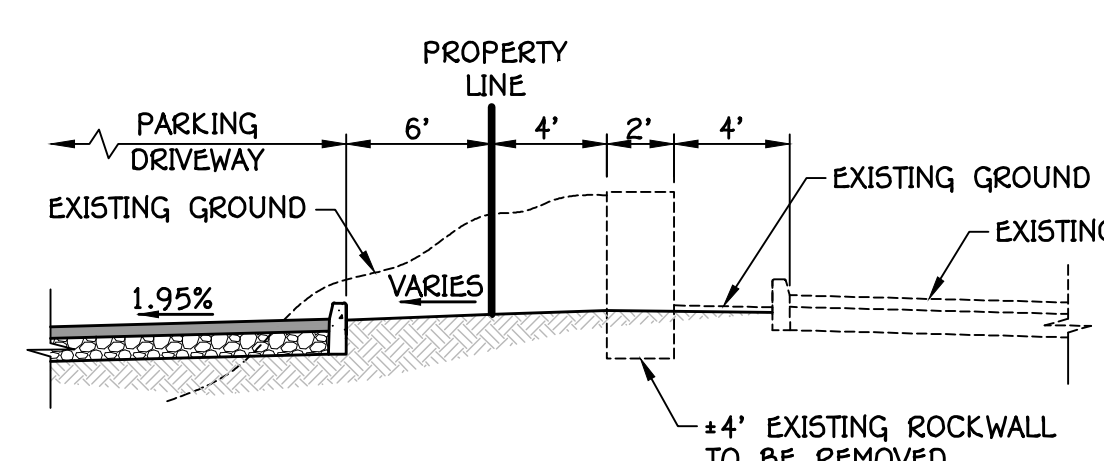
CITY OF ROSEVILLE 1513 EUREKA ROAD CALIFORNIA

LEGEND

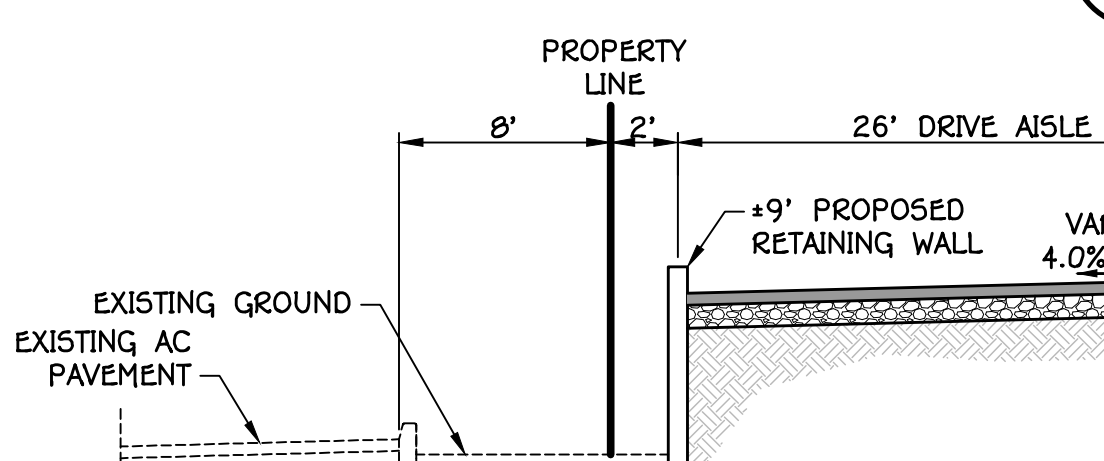
DESCRIPTIONS	(P) PROPOSED	(E) EXISTING
STORM DRAIN	12" D	12" D
SANITARY SEWER	6" S	6" S
WATER MAIN	8" W	8" W
FIRE SERVICE	8" FS	8" FS
CENTERLINE		
RIGHT OF WAY LINE		
BOUNDARY LINE		
ELECTRICAL LINE		
GAS LINE		
TELEPHONE LINE		
JOINT TRENCH		
FENCE	X	X
WOOD FENCE		
WROUGHT IRON FENCE		
WALL		
SIDEWALK WITH CURB AND GUTTER		
VARIABLE CURB FACE		
BARRICADE		
DRIVEWAY		
MANHOLE		
DRAIN INLET		
SEWER CLEANOUT		
WATER SERVICE		
METERED WATER SERVICE		
POST INDICATOR VALVE		
FIRE HYDRANT		
FIRE DEPT. CONNECTION		
BLOWOFF VALVE		
GATE VALVE		
BUTTERFLY VALVE		
REDUCED PRESSURE BACKFLOW PREVENTOR		
DOUBLE DETECTOR CHECK VALVE		
TYPE 'A' STREET LIGHT		
TYPE 'B' STREET LIGHT		
TRAFFIC LIGHT		
TRANSFORMER		
PULLBOX		
PEDESTAL & SERVICE CAN		
UTILITY SERVICE PEDESTAL		
UTILITY POLE		
GUY WIRE		
4 SIDED STREET SIGN		
SIGN		
RIDGE LINE		
DIRECTION OF FLOW		
FLOWLINE		
SWALE		
PAD ELEVATION	000.0	000.0
ELEVATION	123.45	123.45
2:1 SLOPE UNLESS NOTED OTHERWISE		
TREE TO BE REMOVED		
TREE TO REMAIN, CONSTRUCT TEMPORARY FENCE		



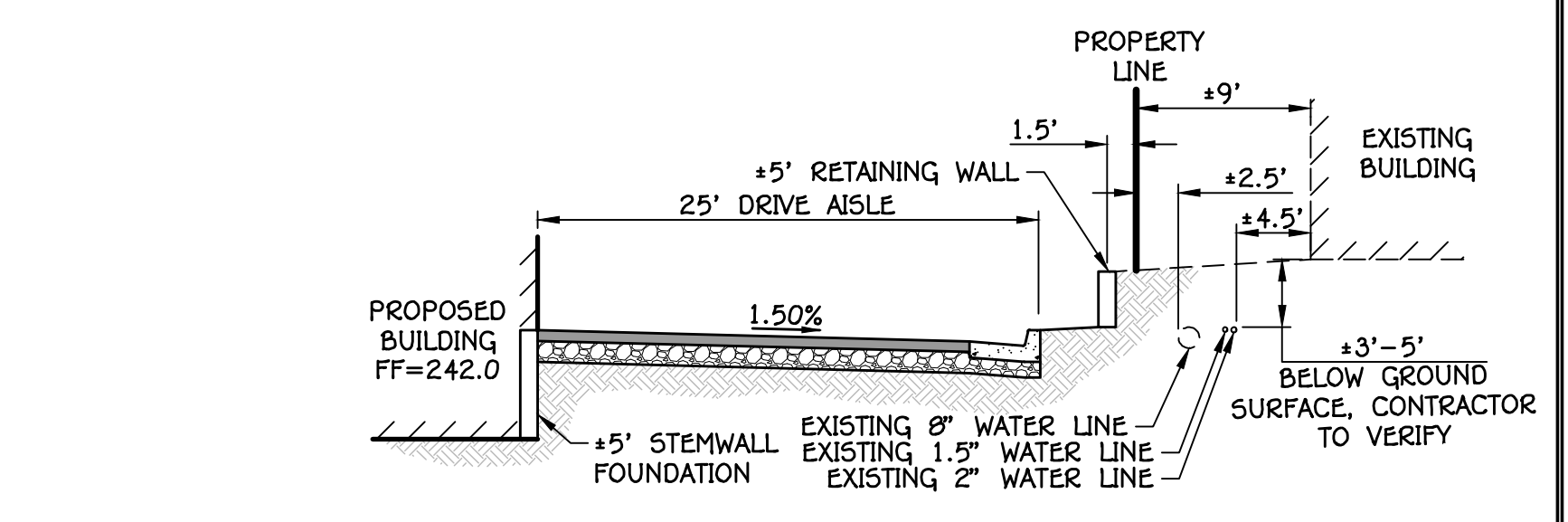
RESTRAINED WATER PIPE DETAIL N.T.S.



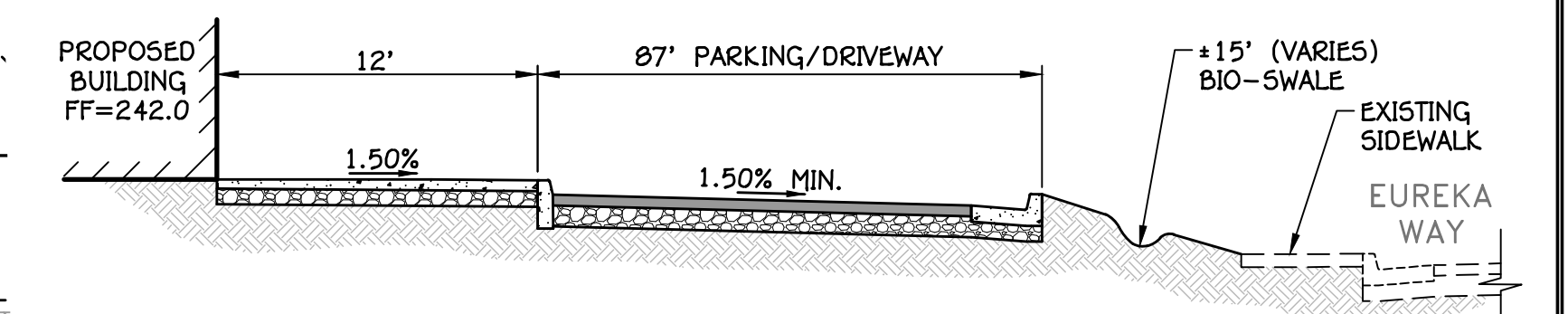
CROSS SECTION F N.T.S.



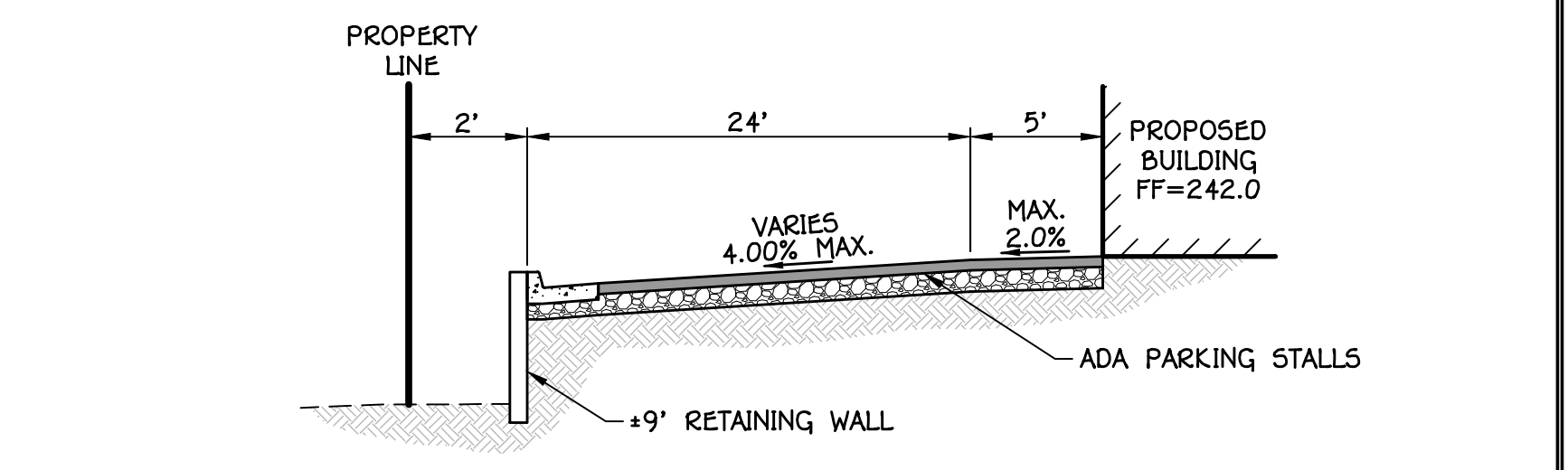
CROSS SECTION G N.T.S.



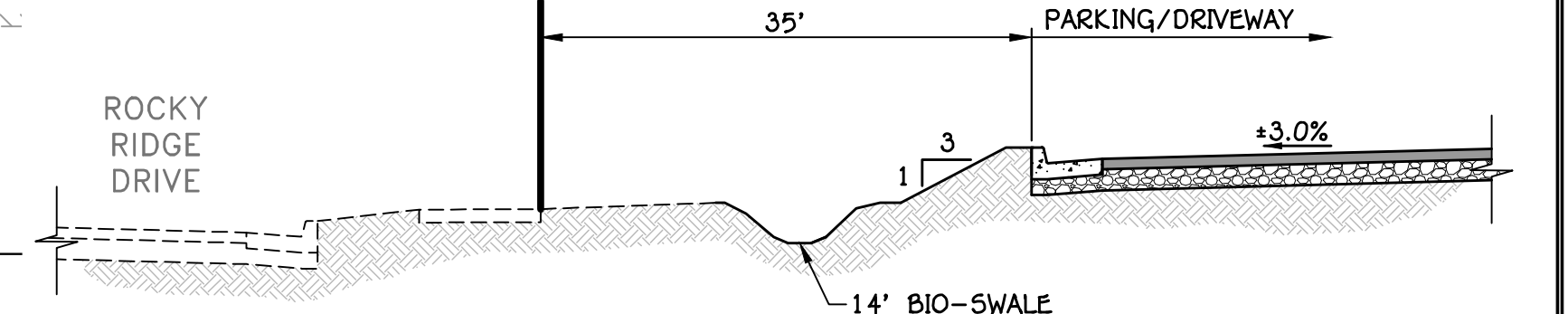
CROSS SECTION A N.T.S.



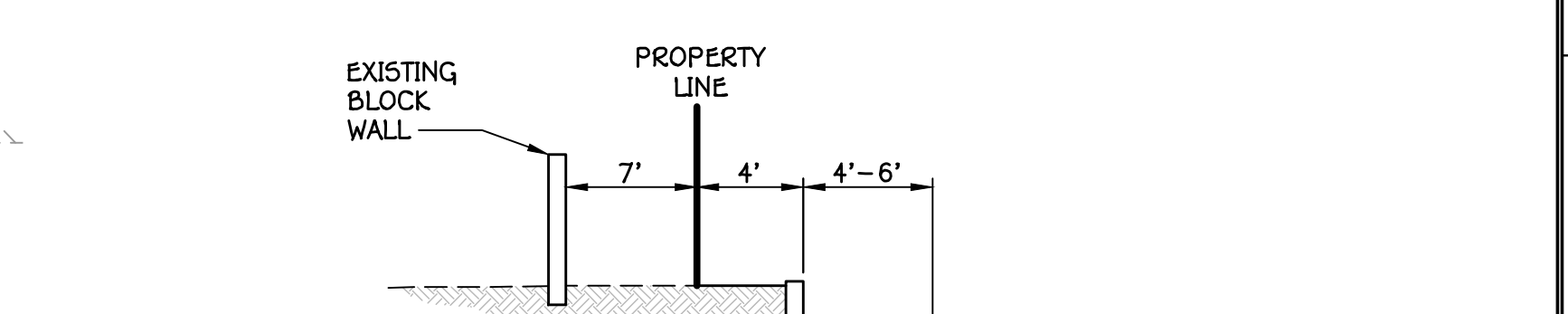
CROSS SECTION B N.T.S.



CROSS SECTION C N.T.S.



CROSS SECTION D N.T.S.



CROSS SECTION E N.T.S.

**PRELIMINARY GRADING AND UTILITY PLAN FOR:
ROSEVILLE MERCEDES BENZ SPRINTER VAN
1513 EUREKA ROAD
AUGUST 17, 2023**

B BURRELL CONSULTING GROUP, INC.
1001 Enterprise Way, Suite 100 Roseville, CA 95678 (916) 783-8898

ALL UTILITIES SHOWN ARE BASED ON RECORD DRAWINGS AND FIELD SURVEY. THE ENGINEER HAS CONDUCTED VISUAL INSPECTIONS OF EXISTING UTILITIES AND HAS NOTED ANY DISCREPANCIES. THE ENGINEER HAS NOT CONDUCTED A FULL-SCALE UTILITY LOCATING SURVEY. THE ENGINEER HAS NOT CONDUCTED A FULL-SCALE GROUND PENETRATING RADAR (GPR) SURVEY. THE ENGINEER HAS NOT CONDUCTED A FULL-SCALE SOIL BORING SURVEY. THE ENGINEER HAS NOT CONDUCTED A FULL-SCALE GEOTECHNICAL SURVEY. THE ENGINEER HAS NOT CONDUCTED A FULL-SCALE ENVIRONMENTAL SURVEY. THE ENGINEER HAS NOT CONDUCTED A FULL-SCALE HISTORICAL SURVEY. THE ENGINEER HAS NOT CONDUCTED A FULL-SCALE ARCHAEOLOGICAL SURVEY. THE ENGINEER HAS NOT CONDUCTED A FULL-SCALE PALEONTOLOGICAL SURVEY. THE ENGINEER HAS NOT CONDUCTED A FULL-SCALE BOTANICAL SURVEY. THE ENGINEER HAS NOT CONDUCTED A FULL-SCALE ZOOLOGICAL SURVEY. THE ENGINEER HAS NOT CONDUCTED A FULL-SCALE ENTOMOLOGICAL SURVEY. THE ENGINEER HAS NOT CONDUCTED A FULL-SCALE MICROBIOLOGICAL SURVEY. THE ENGINEER HAS NOT CONDUCTED A FULL-SCALE CHEMICAL SURVEY. THE ENGINEER HAS NOT CONDUCTED A FULL-SCALE PHYSICAL SURVEY. THE ENGINEER HAS NOT CONDUCTED A FULL-SCALE METEOROLOGICAL SURVEY. THE ENGINEER HAS NOT CONDUCTED A FULL-SCALE CLIMATOLOGICAL SURVEY. THE ENGINEER HAS NOT CONDUCTED A FULL-SCALE AERONAUTICAL SURVEY. THE ENGINEER HAS NOT CONDUCTED A FULL-SCALE ACOUSTICAL SURVEY. THE ENGINEER HAS NOT CONDUCTED A FULL-SCALE OPTICAL SURVEY. THE ENGINEER HAS NOT CONDUCTED A FULL-SCALE ELECTROMAGNETIC SURVEY. THE ENGINEER HAS NOT CONDUCTED A FULL-SCALE SEISMOLOGICAL SURVEY. THE ENGINEER HAS NOT CONDUCTED A FULL-SCALE COSMOLOGICAL SURVEY. THE ENGINEER HAS NOT CONDUCTED A FULL-SCALE ASTROLOGICAL SURVEY. THE ENGINEER HAS NOT CONDUCTED A FULL-SCALE METEOROLOGICAL SURVEY. THE ENGINEER HAS NOT CONDUCTED A FULL-SCALE CLIMATOLOGICAL SURVEY. THE ENGINEER HAS NOT CONDUCTED A FULL-SCALE AERONAUTICAL SURVEY. THE ENGINEER HAS NOT CONDUCTED A FULL-SCALE ACOUSTICAL SURVEY. THE ENGINEER HAS NOT CONDUCTED A FULL-SCALE OPTICAL SURVEY. THE ENGINEER HAS NOT CONDUCTED A FULL-SCALE ELECTROMAGNETIC SURVEY. THE ENGINEER HAS NOT CONDUCTED A FULL-SCALE SEISMOLOGICAL SURVEY. THE ENGINEER HAS NOT CONDUCTED A FULL-SCALE COSMOLOGICAL SURVEY. THE ENGINEER HAS NOT CONDUCTED A FULL-SCALE ASTROLOGICAL SURVEY.